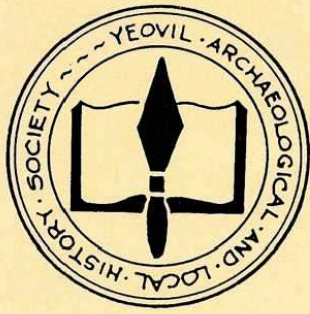


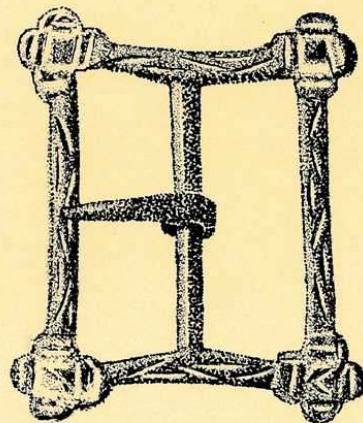
ISSN 0268652



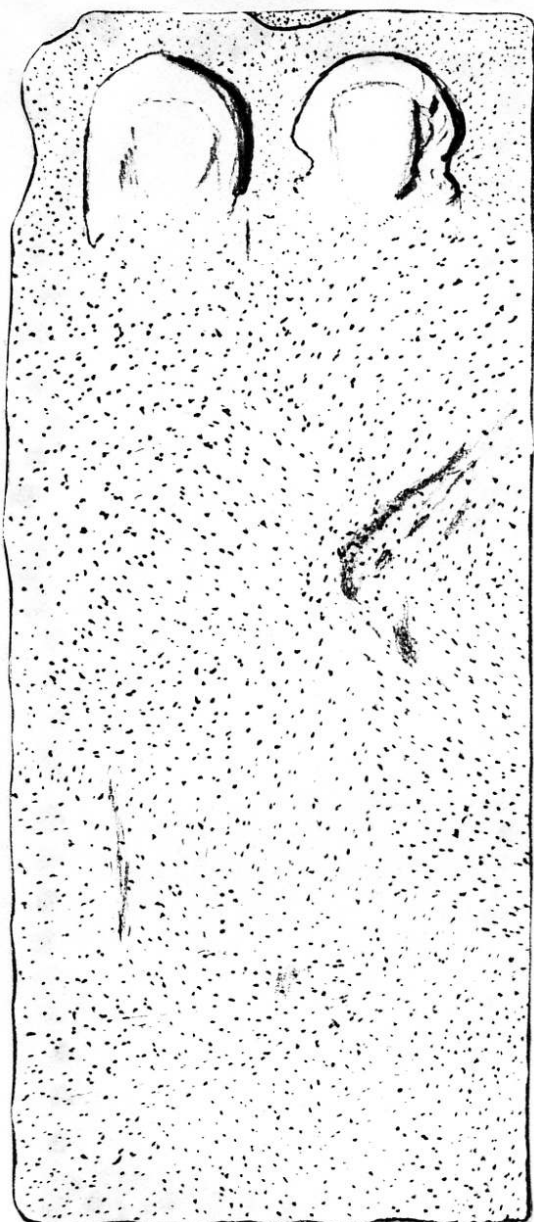
Chronicle

Volume 4 No.2

April 1988

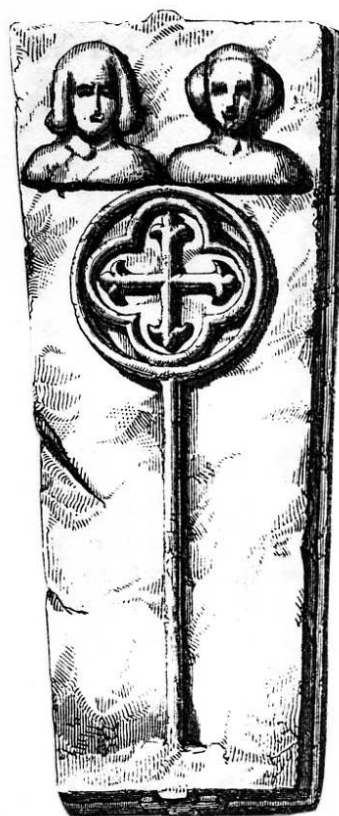


Journal of Yeovil Archaeological and Local History Society



1 foot

(a) BABCARY CHURCHYARD SOMERSET



(b) SILCHESTER CHURCHYARD
HAMPSHIRE
(From Boutell's Christian
Monuments, 1854 p.135)

UNRECORDED MEDIEVAL MEMORIAL SLAB IN BABCARY CHURCHYARD

Plate 6

In the north west corner of the churchyard of Babcary parish church a weathered stone monument lies close to the boundary wall and largely obscured by grass. The only remaining details are the worn heads carved in low relief, of male and female figures. The man is bare headed with curling hair and the lady wears a full veil. This style of monument was common in the first half of the 14th century and the drawing on the right gives an indication of what its original appearance might have been. Although they are distributed very widely there is a concentration of memorials of this type in the Bristol region and in those parts of Eire which had close trading links with Bristol. The Babcary monument may have been made locally under the influence of Bristol fashion and is one of a series of medieval monuments to the north and west of Yeovil which feature what were presumably representations of a married couple carved on the same stone.